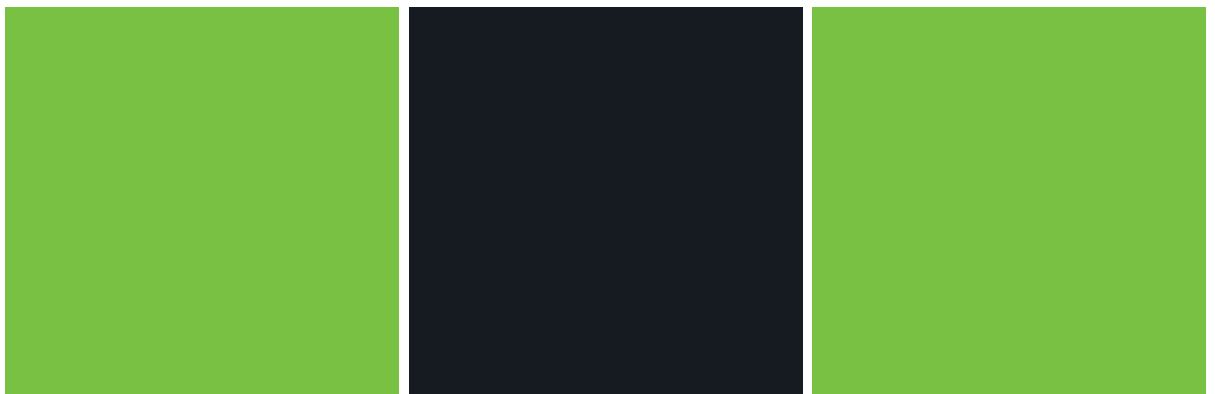




Liune



RESIDENT'S GUIDE

RESIDENT'S GUIDE



- Do not push the door leaf against the sliding direction. Do not subject the door to any use of force.
- Avoid strong impacts of the door leaf to the counter jamb.
- It is forbidden to attach cabinets or other furniture to the Liune element unless the attachment is enabled in the design and assembly phase by installing a furniture support.



1 DOOR OPERATION

To open the door, pull the handle and press the end of the door to slide it inside the wall. The pop-up latch will lock it in place. To move the door, press the end of the door at the height of the handle until the pop-up latch pushes the door edge out of the wall. To close the door, pull the handle in the door leaf.

2 DOOR MAINTENANCE

It is permissible to clean the surfaces with a towel moistened in mild water-detergent solution. The Liune door system does not require other maintenance. The pop-up latch is located in the door. The door can be replaced following new interior design trends. The door can easily be replaced by removing the jambs.

RESIDENT'S GUIDE



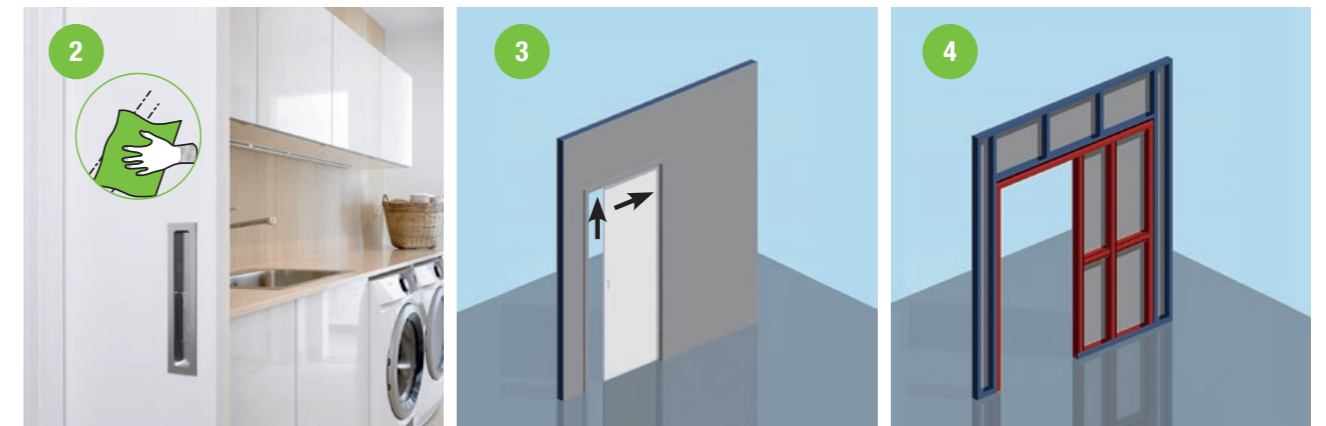
Slots for electrical fittings



3

SAFETY

Ensure that inappropriate objects do not enter the space between the door and the jambs. When wiping jamb and door surfaces, be cautious of any sharp edges within the spaces between the jambs. All materials used by Liune meet the requirements of the M1 indoor air classification.



4 ATTACHING OBJECTS TO THE LIUNE WALL

Check the length of screws and anchors before attachment. The maximum length of fasteners is 22 mm. Remove the door from the Liune pocket when inserting screws or anchoring fasteners to the pocket walls.

LOCATION OF THE LIUNE ELEMENT IN THE WALL:

(Marked in red in the figure) The Liune element is located where the door slides inside the partition wall, i.e. Liune pocket. The width of the Liune element is approx. two times the width of the doorway.



Liune manufacture and sales:

Aulis Lundell Oy
Tel +358 20 7341 400
sales@liunedoor.com
www.liunedoor.com

LIUNE
NORDIC
DESIGN



EPD No. RTS_38_19
LIUNE door system
with glass/MDF door.



Liune doors are manufactured in compliance with the
ISO 9001:2015 quality system and the valid regulations
and provisions using CE-marked profiles.



Business environmentally certified since 2004.
Liune Door is patented in the EU, Norway and
the USA.



**THE IMAGES IN THIS INSTRUCTION MANUAL MAY ONLY BE USED BY
CUSTOMERS AND PARTNERS OF AULIS LUNDELL OY WHEN THE SOURCE
IS MENTIONED. WE RESERVE THE RIGHT TO MAKE CHANGES TO
THE IMAGES AND THE ACCOMPANYING TEXTS.**



www.liunedoor.com

